

Dust and Sand Storms Over Egypt.

Prepared by: Ahmed Awd.
Aerodrome Weather Forecaster.
Cairo Airport Met Office.
Egyptian Meteorological Authority.



The location of Egypt

The Arab Republic of Egypt is a sovereign country located in eastern North Africa that includes the Sinai peninsula, a land bridge to Asia. Covering an area of about 1,001,450 square kilometers (386,660 sq mi), Egypt borders Libya to the west, Sudan to the south, and the Palestine to the east. Its northern coast borders the Mediterranean Sea, and the eastern coast borders the Red Sea. Egypt is one of the most populous countries in Africa about 85 million people live near the banks of the Nile River. Egypt is famous for its ancient civilization and some of the world's oldest monuments, including the Giza pyramid complex with the Great Sphinx, the step pyramid at Sakkara, Edfu Temple, Abu Simbel, and many other beautiful monuments in Egypt.



Pictures from Egypt



Egypt After Revolution



Sand And Dust Storm over Egypt

Dust storm phenomenon over Egypt is considered to be most striking weather hazard, dust, sand are raised from the ground by strong southerly wind or south west wind coming from west Africa toward east parallel to the coast of the Mediterranean to depending on meteorological conditions and state of soil including the size of the particles.



Types of Dust and Sand Storms in Egypt

There are three types of dust storms that affect over Africa, and middle east:

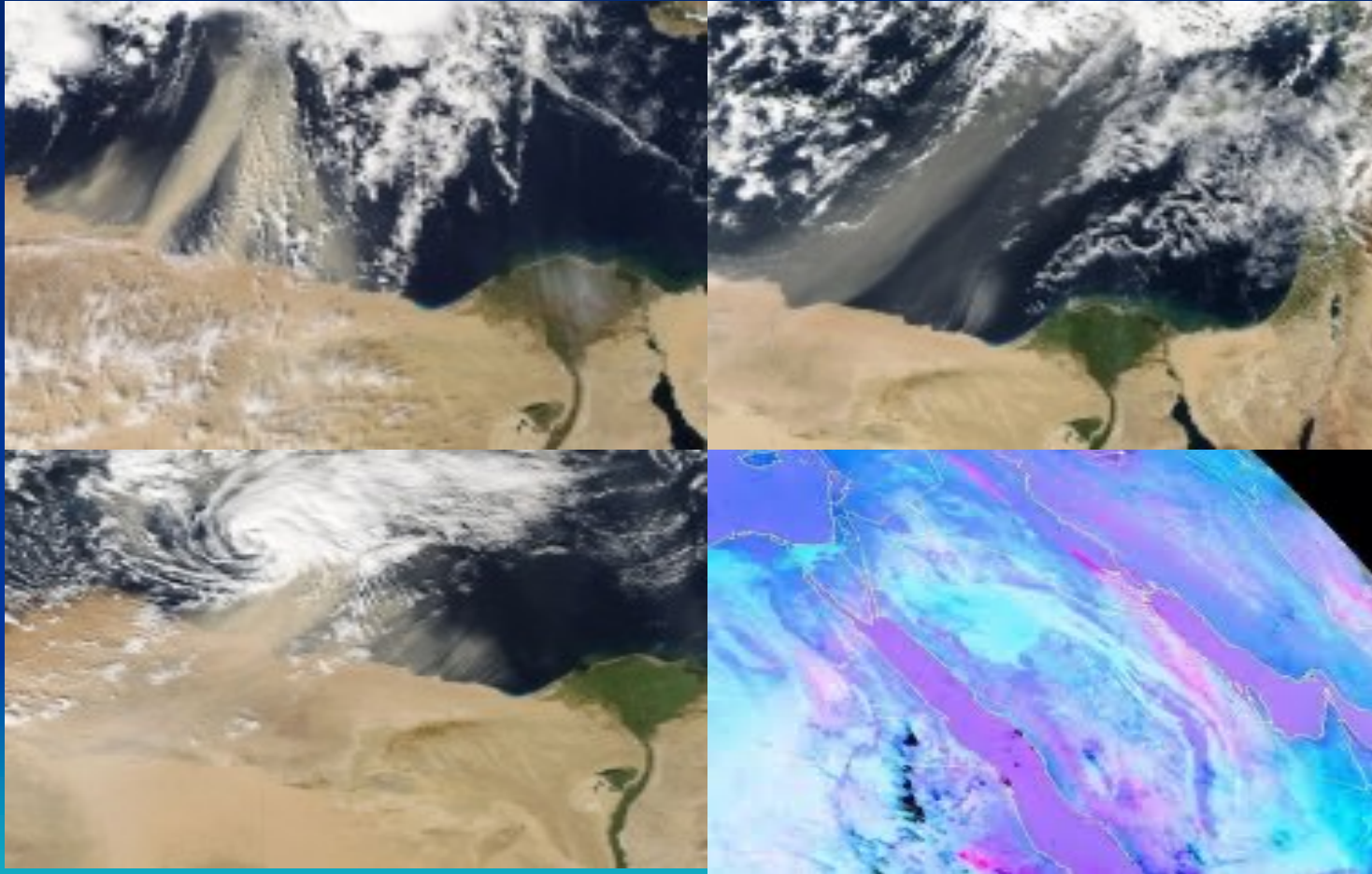
1-Sahara depression (desert cyclone) formed in the lee side of Atlas Mountain range during spring.

2-Winter type caused by steeping of the pressure gradient with southerly winds in front of deep extra tropical cyclones forming of the east mediate this type occurs mostly in winter.

3-Cold front type caused by steeping of the pressure gradient winds in cold air in the rare of cold fronts associated with deep extra tropical cyclones.



Some Images from Satellites for Dust Storms over Egypt



Some Pictures on Dust Storms in Egypt



Egypt is Safe

